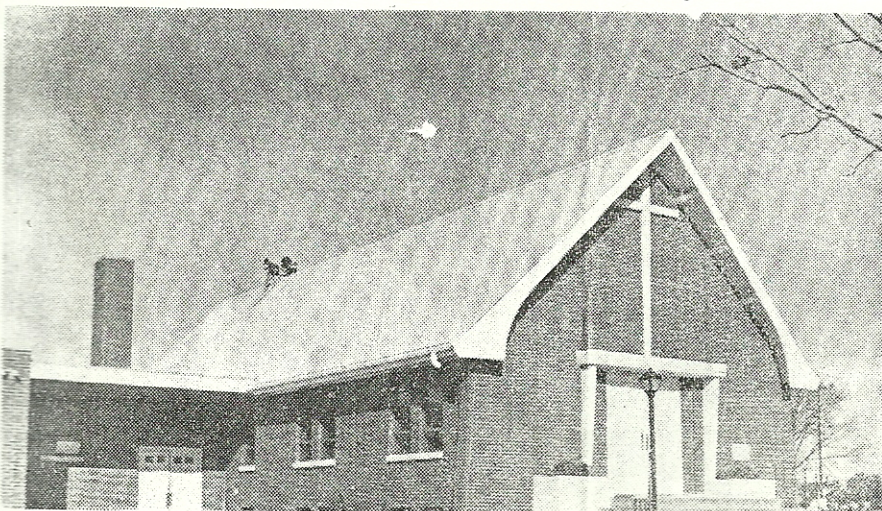




Today's Kindergarteners, Tomorrow's Engineers



This Will Be Chapel When Church Is Completed

Concordia Lutheran

Check '60

Suburban Church Builds for Future

EDITOR'S NOTE: This is another in the Rockford Register-Republic's weekly series of word and picture stories about the community's churches.

By **JACK NELSON**

Register-Republic Staff Writer

Concordia Lutheran Church, 7424 N. 2nd St., "is building for the future of the greater Rockford area."

Those are the words of Rev. R. H. Lawrenz, pastor of a congregation which in less than 10 years has grown from a charter membership of 27 to a church and parochial school that serves 1,000 men, women and children.

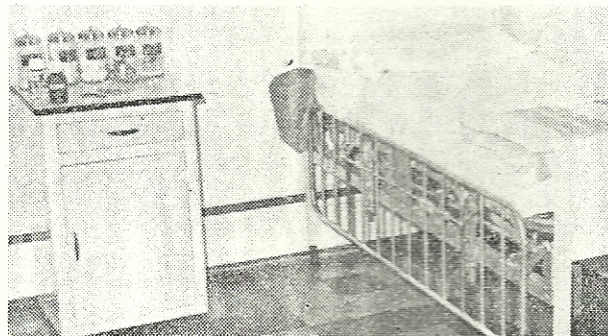
His Missouri Synod congregation believes the Rockford area will continue to grow at a rapid rate. The members stand ready

to keep abreast of that growth. "We are here to serve," the pastor said, "as best we can."

The church was organized in 1952 and met in the Park Theater until its sanctuary building was completed in 1955. An 11 classroom education wing was opened in September, increasing the value of Concordia facilities to \$325,000.

Concordia operates a parochial school with an enrollment of 200 children in kindergarten and six grades. The church plans to add a grade a year through the junior high level. The next facility to be built will be a gymnasium.

"We anticipate an enrollment of 700 to 800," the pastor said. Additional adult church members are expected to raise Concordia's constituency to more than 2,000 by 1970.



School Equipped for Emergencies